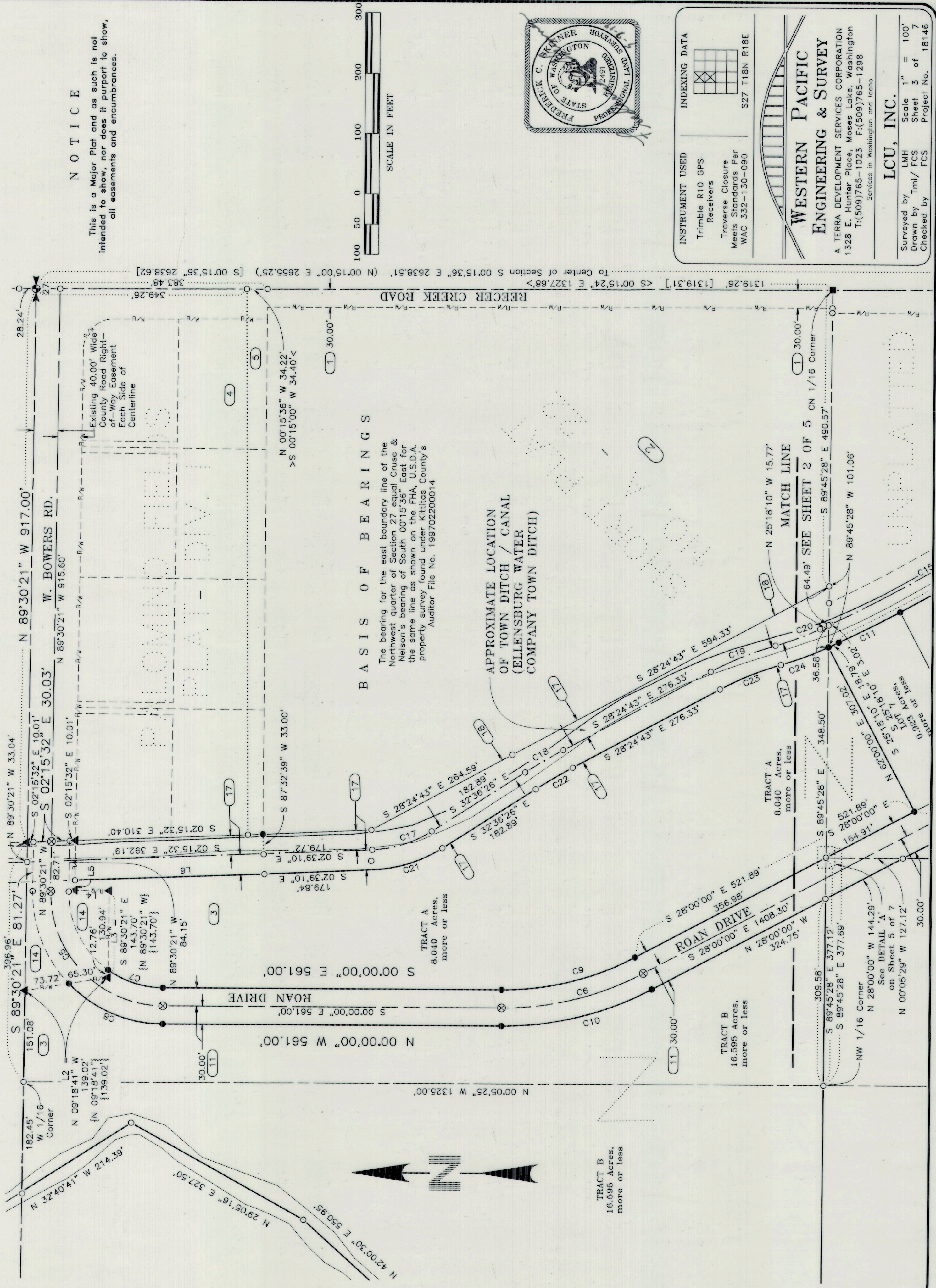


PALOMINO FIELDS PLAT - DIVISION II

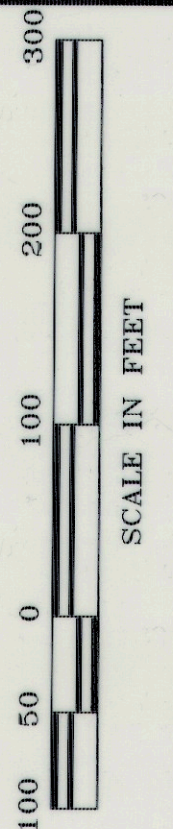
A PTN. OF THE E 1/2 OF THE NW 1/4 OF SECTION 27, TOWNSHIP 18 NORTH, RANGE 18 EAST, W.M. KITITAS COUNTY, WASHINGTON

Receiving No.
LPF - 19-00003
LP - 07-00031
181827



NOTICE

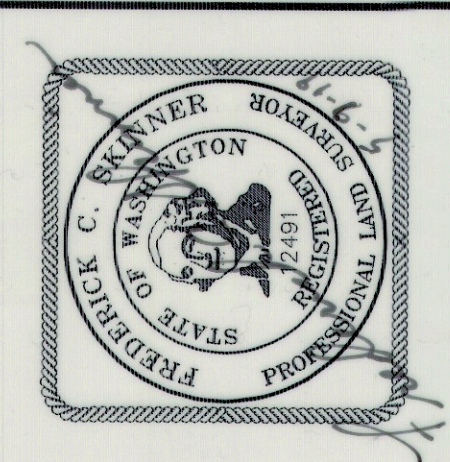
This is a Major Plat and as such is not intended to show, nor does it purport to show, all easements and encumbrances.

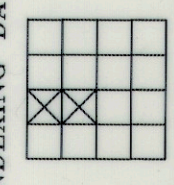


BASIS OF BEARINGS

The bearing for the east boundary line of the Northwest quarter of Section 27 equal Cruse & Nelson's bearing of South 00°15'36" East for the same line as shown on the F.H.A., U.S.D.A. property survey found under Kittitas County's Auditor File No. 199702200014

APPROXIMATE LOCATION OF TOWN DITCH / CANAL (ELLENSBURG WATER COMPANY TOWN DITCH)



INSTRUMENT USED	Trimble R10 GPS Receivers Traverse Closure Meets Standards Per WAC 332-130-090
INDEXING DATA	 S27 T18N R18E
WESTERN PACIFIC ENGINEERING & SURVEY	
A TERRA DEVELOPMENT SERVICES CORPORATION 1328 E. Hunter Place, Moses Lake, Washington T:(509)765-1023 F:(509)765-1298 Services in Washington and Idaho	
LCU, INC.	
Surveyed by LMH	Scale 1" = 100'
Drawn by Tml/FCS	Sheet 3 of 7
Checked by FCS	Project No. 18146